

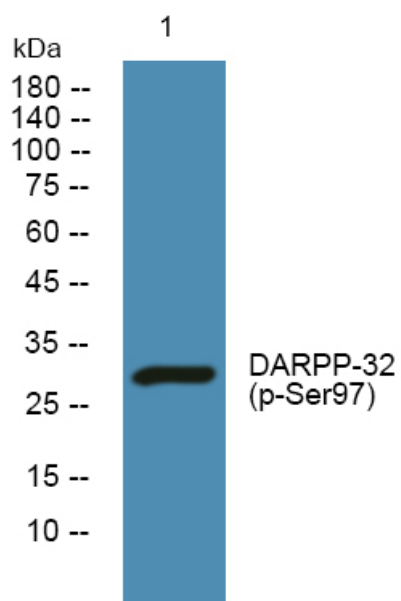


DARPP-32 (phospho-Ser97) rabbit pAb

Catalog No	YP-Ab-12670
Isotype	IgG
Reactivity	Human;Mouse;Rat
Applications	WB
Gene Name	PPP1R1B DARPP32
Protein Name	DARPP-32 (Ser97)
Immunogen	Synthesized phosho peptide around human DARPP-32 (Ser97)
Specificity	This antibody detects endogenous levels of Human Mouse Rat DARPP-32 (phospho-Ser97)
Formulation	Liquid in PBS containing 50% glycerol, 0.5% BSA and 0.02% sodium azide.
Source	Polyclonal, Rabbit,IgG
Purification	The antibody was affinity-purified from rabbit serum by affinity-chromatography using specific immunogen.
Dilution	WB 1:1000-2000
Concentration	1 mg/ml
Purity	≥90%
Storage Stability	-20°C/1 year
Synonyms	Protein phosphatase 1 regulatory subunit 1B (DARPP-32) (Dopamine- and cAMP-regulated neuronal phosphoprotein)
Observed Band	30kD
Cell Pathway	Cytoplasm.
Tissue Specificity	Adipose tissue,Brain,Cerebellum,Colon,Ovary,
Function	function:Inhibitor of protein-phosphatase 1.,PTM:Dopamine- and cyclic AMP-regulated neuronal phosphoprotein.,PTM:Phosphorylation of Thr-34 is required for activity.,similarity:Belongs to the protein phosphatase inhibitor 1 family.,
Background	This gene encodes a bifunctional signal transduction molecule. Dopaminergic and glutamatergic receptor stimulation regulates its phosphorylation and function as a kinase or phosphatase inhibitor. As a target for dopamine, this gene may serve as a therapeutic target for neurologic and psychiatric disorders. Multiple transcript variants encoding different isoforms have been found for this gene. [provided by RefSeq, Oct 2011],
matters needing attention	Avoid repeated freezing and thawing!

Usage suggestions

This product can be used in immunological reaction related experiments. For more information, please consult technical personnel.

Products Images

Western blot analysis of lysates from K562 cells, primary antibody was diluted at 1:1000, 4° over night